

# Far West Side Area Commission



City of Columbus  
Recreation & Parks

## Audit Prioritization

November 2024

with Columbus Rec & Parks responses (March 25, 2025)

## Far West Side Area Commission Parks

Population Estimate:  
38,000 residents  
City of Columbus Parks  
274.5 acres total

### **5 Parkland Areas**

#### **By Priority after Primary Challenge**

##### **1-Frank's Park**

w/ Clover Groff Natural Area

##### **2-Spindler Park**

Spindler Soccer Park

Spindler Dog Park

Mudsock Trail

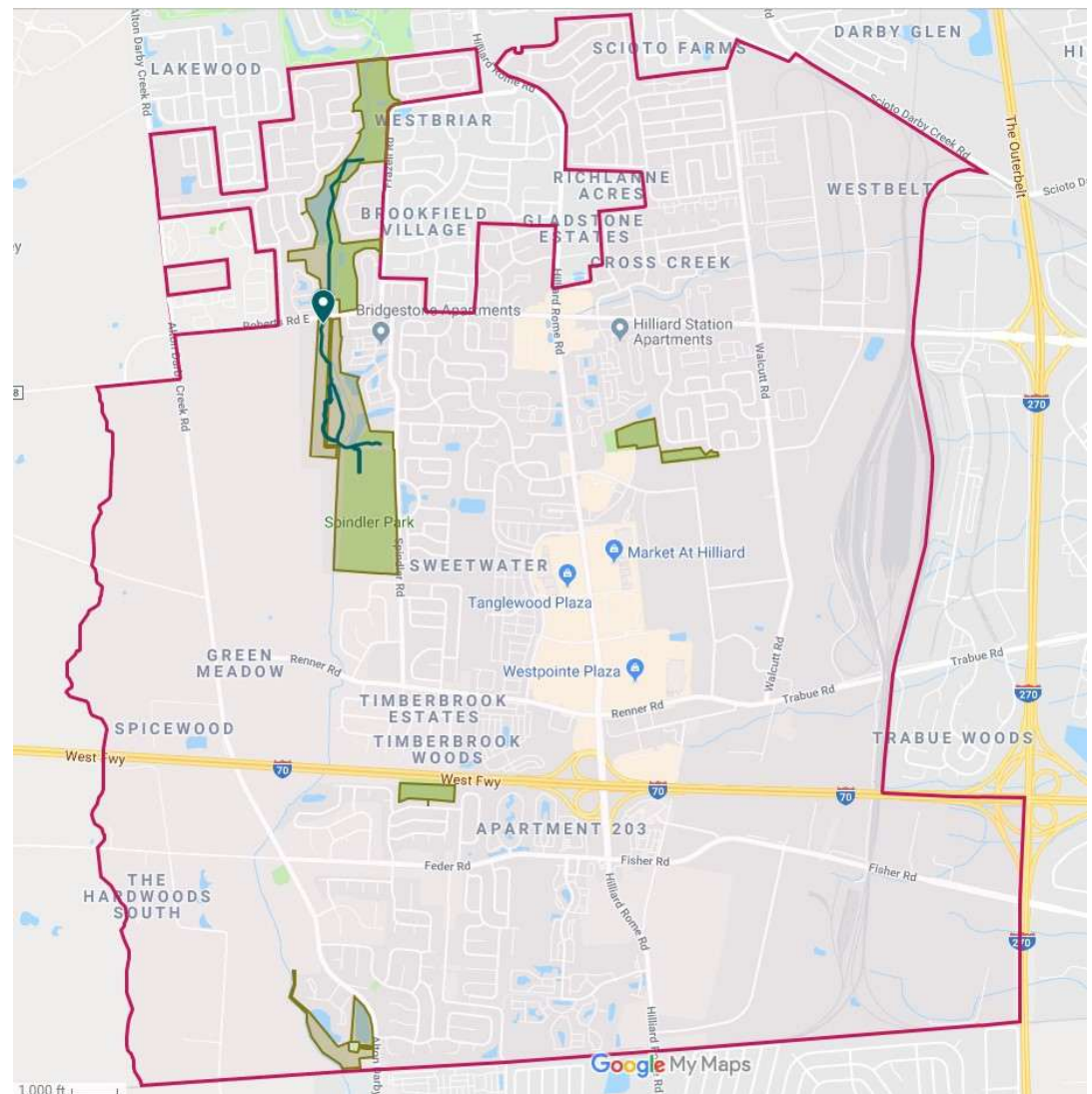
Anderson Farms Parkland

##### **3-Hilliard Green Park**

##### **4-Clover Park**

Wexford Green Park

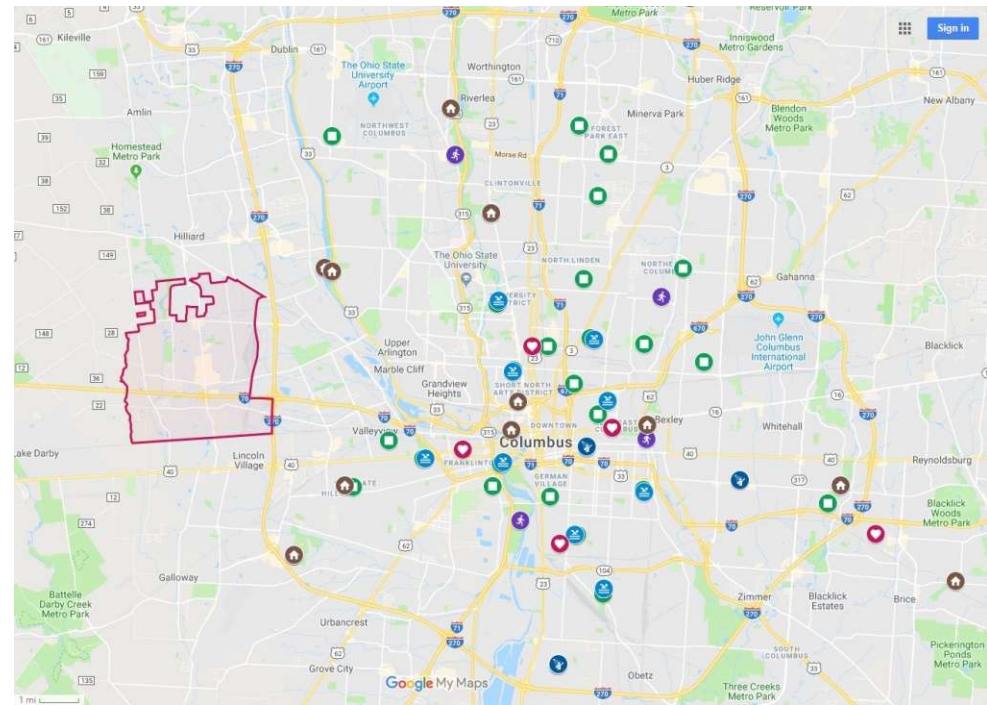
Far West Side Area Commission Map:  
Parks / Trails / Big Darby Accord  
[goo.gl/69Mvby](http://goo.gl/69Mvby)



# Primary Challenge

## ■ ***Lack of Public Meeting & Recreation Programming Space***

- Land acquisition necessary to create public options for Far West Side residents
- Lack of nearby Pool/Community Center options; nearest Columbus pool facility is 5-8 miles away
- Was not addressed in Rec & Park's audit response



Columbus Community Centers / Pools / Athletic Facilities  
relative to Far West Side Area Commission  
<http://bit.ly/2CuLhak>

# Columbus Rec & Parks Response

## Primary Challenge

---

### ❑ No response

#### ■ Commissioner added notes:

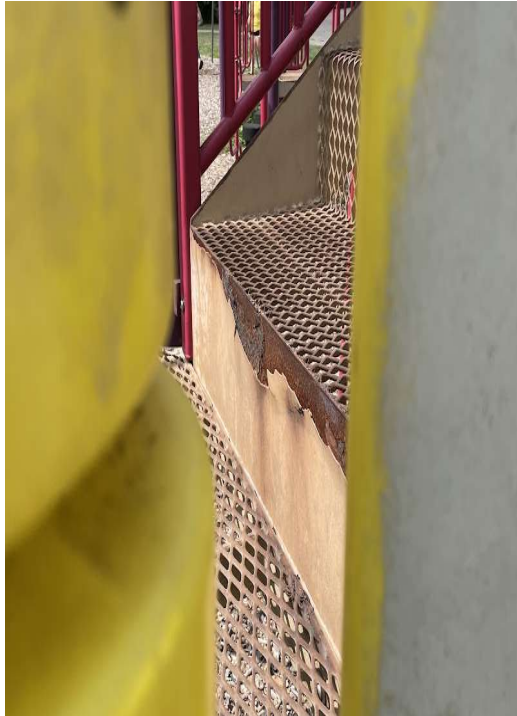
- ❑ At the July 17, 2025 Capital Budget Town Hall, it was noted the City of Columbus should have four indoor aquatic centers for a city of its population size. Columbus currently only has one and it is in need of refurbishment.
- ❑ The 2023 Aquatics Capital Improvement Plan of May 2023 was additionally referenced during this meeting. The report notes the Far West Side as a potential pool site based on projected population density (pages 12 & 65)
  - <https://columbusrecparks.com/wp-content/uploads/2024/03/2023ColumbusAquaticsCapitalImprovementPlanReport.pdf>



# Frank's Park

88.2 acres

Frank's Park  
Clover Groff Natural Area



## □ Priority 1

- Playground Replacement
  - Sharp edges due to cracks / peeling of plastic coatings
  - Missing equipment
  - Lack of ADA accessibility
- Add Shelter
- Mudsock Trail to Bridge transition need fill and grading
  - Tripping hazard



# Columbus Rec & Parks Response – Frank's Park

---

- ❑ Playground Replacement
  - A survey was developed and shared with the community that enabled CRPD to collect 650 responses. Using this information, plans are being developed for the replacement of the current playground equipment
  - A new playground will be installed in Fall 2025/Winter 2026 serving a broader range of ages and physical abilities.
- ❑ Additional amenities:
  - A new timber guardrail and trees will be installed in Spring 2026 along the southwest entry-drive off of Frazell Road that will prevent vehicles from driving on the fields and parking along the entry
  - A new open shelter
  - A new shelter will be included when the playground is replaced
  - A wooden screening will be added for the porta-lets
  - Site furnishing
  - Benches were added in 2025 to the existing table
  - Replacing existing site furnishing in Spring 2026 as project budget allows
- ❑ Mudsock Trail to Bridge transition need fill and grading
  - Three tons of limestone fill was added in 2025 to improve drainage, grade, and remove the trip hazard at the bridge



# Spindler Park 134.2 acres

Spindler Soccer Park  
Spindler Dog Park  
Mudsock Trail  
Anderson Farms Parkland



## □ Priority 2

- Add playground and/or additional sport options
  - Underutilized space should be repurposed for more options including additional playground
- Fill and regrade connection from Spindler Dog Park to Mudsock Trail
  - Has not been addressed in the past 5 years
- Fix fencing at Spindler Dog Park
- Fix water fountain at Spindler Dog Park
- Fix message board at Spindler Dog Park
- Removal of Shipping Containers



**March 2019**



**August 2024**

# Columbus Rec & Parks Response – Spindler Park

---

- ❑ Add playground and/or additional Sport options (Underutilized space should be repurposed for more options including additional playground.)
  - These requests for Spindler Sports Park are longer term fixes/enhancements. CRPD has committed to having a gate open during the week to allow public access to the park. CRPD's first priorities at the site is: 1) improve parking at the facility and 2) build a maintenance facility that will enable us to remove the cargo containers and formalize the operational space. Once those priorities are achieved the department will look at adding a playground, replacing shelters, and other park amenities.
- ❑ Fill and regrade connection from Spindler Dog Park to Mudsock Trail
  - New limestone fill was added to the Mudsock Trail in 2025 to improve the grading and drainage.
- ❑ Fix fencing at Spindler Dog Park
  - Repairs made in 2025 removed wooden board and replaced with chain link fencing, with soil added where gaps exist under the fencing.
  - Seeding and straw added to the large dog area
- ❑ Fix water fountain at Spindler Dog Park
  - Turned-off for the season in 2024 and will soon be turned-on
- ❑ Fix message board at Spindler Dog Park
  - Scheduled for removal by the end of March.



# Hilliard Green Park

16.9 acres



## □ Priority 3

### □ Connect park with additional neighborhoods:

- Countryview Apartments
- Bayside Apartments
- Hilliard Station Apartments

### □ Walking Path

- Limestone fill placement inconsistent



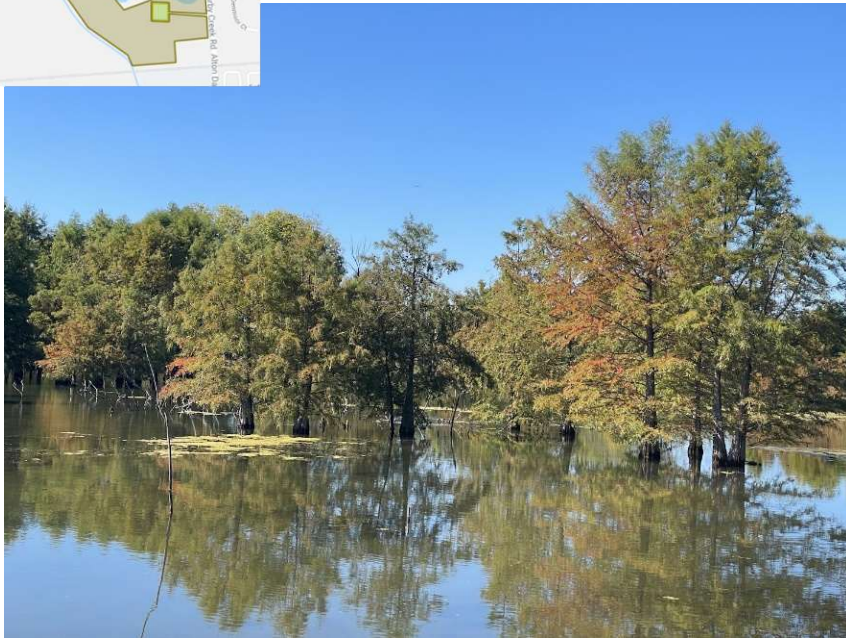
# Columbus Rec & Parks Response – Hilliard Green Park

---

- Connect park with additional communities:
  - CRPD will add a short path connecting park trail to Atlas Street
  - CRPD owns only a portion of the woods that are northwest of the developed portion of Hilliard Green Park and future connectivity with Hilliard Station Apartments would require an easement from the landowner. CRPD currently doesn't have the capacity to implement this project in the near term.
- Walking Path - Limestone fill placement inconsistent
  - Additional limestone was added to the walking path in 2024 and again in 2025



# Clover Park 25.0 acres



## □ Priority 4

### □ Collaboration with partner agencies

- While this space is not under CRPD controls, it is incumbent upon the City of Columbus to work with all relevant parties towards a sustainable solution for this "park."
- Invasive plant species mitigation
  - Callery Pear
  - Honeysuckle
  - Common Reed (*Phragmites Australis*)
  - Multiflora Rose
  - Autumn Olive



# Columbus Rec & Parks Response – Clover Park

- CRPD and the Department of Public Utilities have had multiple coordination meetings to assess what can be done at this site. Together the agencies will make improvements on their respective sites with the goal of having a cohesive park-like setting. This will not be a project in 2025, but aspects of the project, such as the natural trail development and pollinator garden project could be done in the coming years by CRPD's conservation team and volunteers. The timing on other aspects of the project can be completed based on CRPD's capital staff capacity, budgeting and/or access to grants.
- Concept plan at right, investments will include:
  - Improved gravel parking lot and entry
  - Benches along southern edge of DPU's basin that sits west of Alton and Darby Creek Road
  - Limestone trail from parking lot to the basin (see below)
  - Addition of educational signage about wetlands and storm water
  - Natural trails to be built around the two wetlands
  - Inclusion of a pollinator habitat

